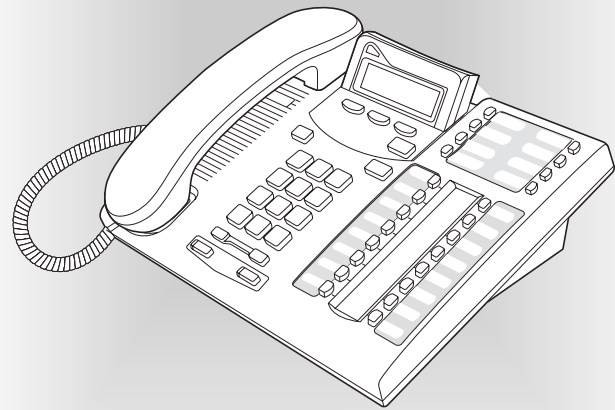
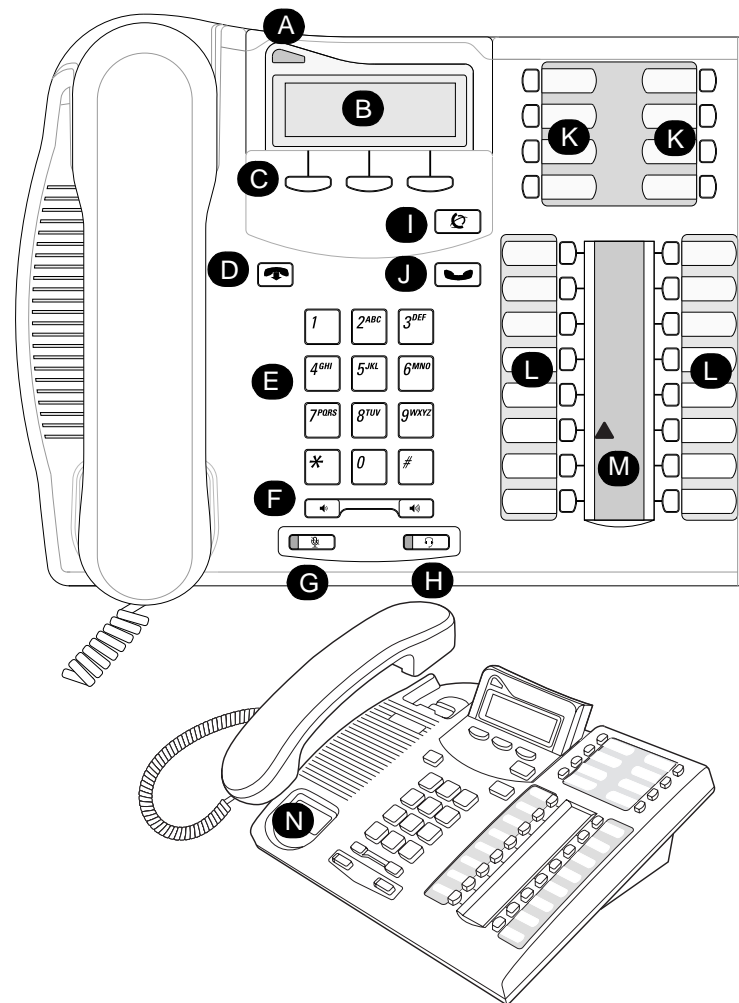


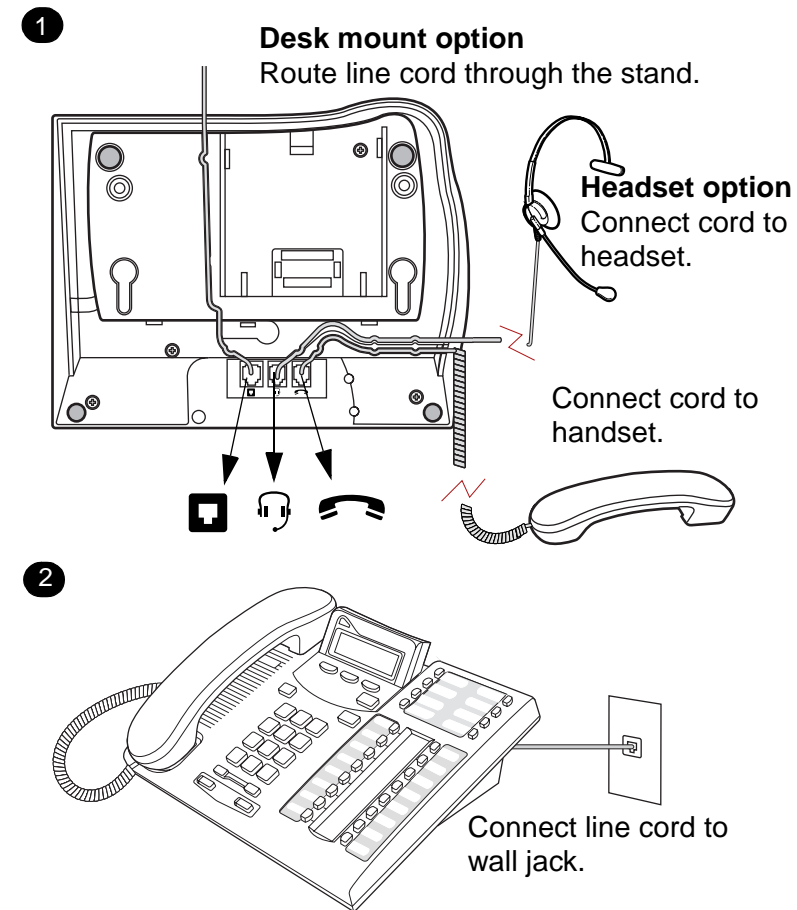
## T7316 Telephone User Card



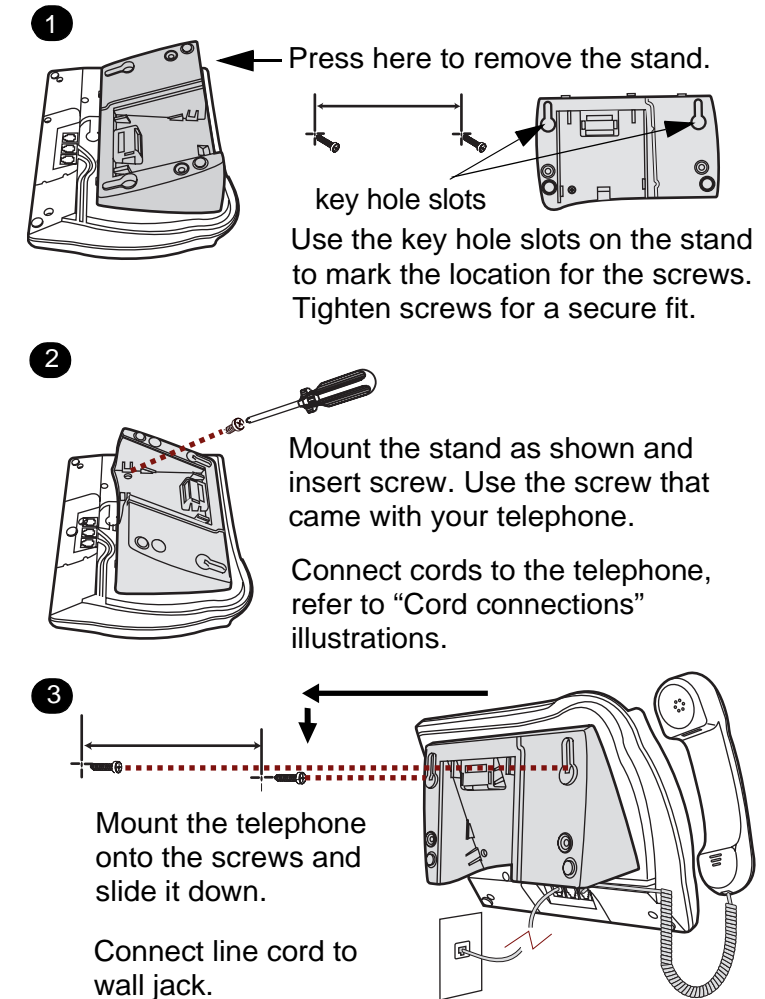
1-800-4 NORTEL  
www.nortelnetworks.com  
© 2000 Nortel Networks  
P0913986 03  
Printed in Canada



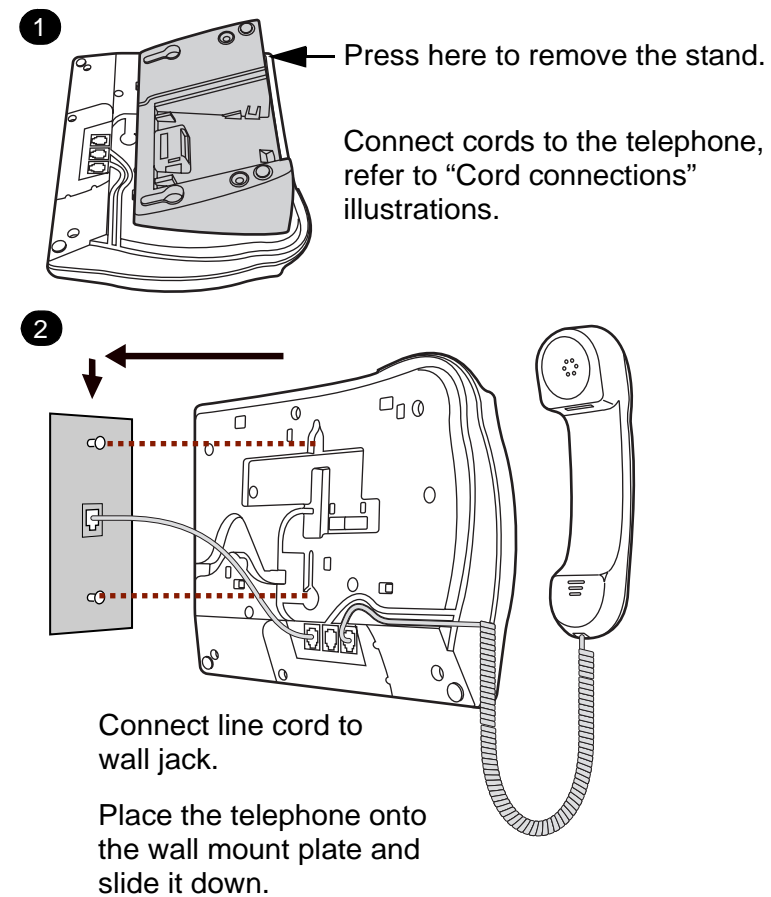
## Cord connections



## Wall mount with a telephone stand



## Wall mount without a telephone stand



## Telephone setup

### Display contrast level

Adjust the contrast of your display.

1. Press **[\*] [7]**.
2. Press **UP** or **DOWN** to view the levels.
3. Press **OK** to select a level.

### Language choice

- [\*] [5] [0] [1]**  
Select Primary Language for the telephone display.
- [\*] [5] [0] [2]**  
Select Alternate Language for the telephone display.
- [\*] [5] [0] [3]**  
Select Alternate Language 2 for the telephone display.
- [\*] [5] [0] [4]**  
Select Alternate Language 3 for the telephone display.

### Ring type

Select a different ring for your telephone.

1. Press **[\*] [6]**.
2. Press **[1]**, **[2]**, **[3]**, **[4]**, or **NEXT** to hear the different ring types.
3. Press **OK** to store the ring type.

## Your T7316 telephone

- A Telephone light**  
Flashes when a call rings at the telephone.
  - B Adjustable display**  
Shows the time and date, call and feature information.
  - C Display buttons**  
The label for display buttons appear in capital letters on the bottom of the display. Display buttons change with each feature you use.
- 
- D Release button**  
Ends an active call.
  - E Dial pad**
  - F Volume control**  
Adjusts the handset, Handsfree, headset and ringer volume.

## Your T7316 telephone

- G Mute button**  
Turns the microphone off or on when you are on a call.
- H Headset button**  
Turns the headset mode on.
- I Feature button**  
Starts or ends a feature.
- J Hold button**  
Places calls on hold.
- K Memory buttons**
- L Memory and line buttons**
- M Indicators**  
Appear next to active line and memory buttons.
- N Number card**  
Write your extension number on this card.

