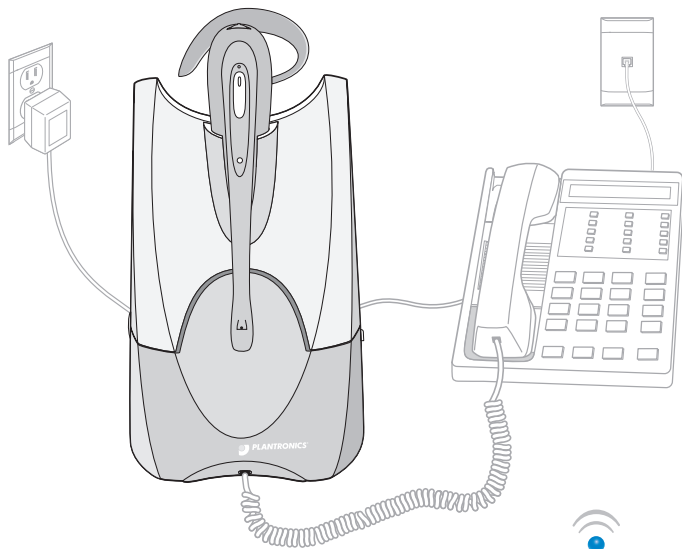


CS50/55 WIRELESS OFFICE HEADSET SYSTEM



Quick Start Guide

PLANTRONICS
SOUND INNOVATION

WELCOME

Thank you for selecting the CS50/55 Wireless Office Headset System from Plantronics. You have made the right choice for comfort and versatility.

This system allows your telephone to use a cordless Plantronics headset through an adapting base. It offers hands-free convenience and long-range workspace mobility.

With the use of an optional handset lifter, the user can remotely receive the telephone's ring alert and can answer the call by simply pushing the talk button on the headset.

This side of the guide has Important Safety Information that should be read prior to set up and use of your system. The Quick Start Guide on the other side identifies the components and provides step-by-step instructions to set up and test the system.


Most telephones will work with little or no adjustments. This system is not designed to work with phones which have the dial pad built into the handset.

The Product Information Booklet in all languages is online at: <http://www.plantronics.com/documentation/>

Choose your preferred language and the Plantronics model number "CS50" to access complete user documentation including this Quick Start Guide and the Product Information Booklet which has more on the system's operation, adjustments, and troubleshooting.

IMPORTANT SAFETY INFORMATION

When using your telephone equipment these basic safety precautions and warnings should be followed to reduce the risk of fire, electric shock, and injury to persons.

- Read and follow all instructions and warnings prior to using the product. The symbol  identifies and alerts the user to the presence of important operating, safety, and service instructions.
- This product contains gold-plated nickel, phosphor bronze and copper. If you experience a skin irritation, discontinue use and contact Plantronics.
- This product is intended to be powered by a Listed Class 2 Direct Plug-In Power Unit, Part No. 45561-02, rated at an input voltage of 120 VAC, 60Hz and an output voltage of 9 VDC at 500mA.
- This product requires AC power in order to operate. During a power outage, have another telephone available that is powered only by the telephone line.

WARNING

- Do not locate this product near water, for example, near a bathtub or sink, in a wet basement, or near a swimming pool.
- This product should never be placed near or over a radiator or heat register. It should not be placed in a built-in installation unless proper ventilation is provided.
- Do not allow anything to rest on the power cord. Do not locate this product where persons walking on it will damage the cord.
- Do not overload outlets and extension cords as this can result in risk of fire or electric shock.
- Never disassemble or push objects of any kind into the product since this may short out parts which could result in a fire or electric shock. Never spill liquid of any kind on the product.
- Use caution when installing or modifying telephone lines.
- Avoid using telephone equipment during an electrical storm.
- Keep all product cords and cables away from operating machinery.
- Do not use this equipment to report a gas leak while you are in the vicinity of a gas leak.
- Never allow children to play with the headset/adaptor—small parts may be a choking hazard.
- Unplug this product from the wall outlet before cleaning. Do not use liquid cleaners or aerosol cleaners. Use a damp cloth for cleaning.

BATTERY PRECAUTIONS

 **To reduce the risk of fire or injury to persons, read and follow these instructions.**

- Use only the battery pack supplied with this product, part number 64399-01.
- Do not dispose of battery pack in a fire. The cells may explode. Check with local codes for disposal instructions.
- Do not open or mutilate battery pack. Released electrolyte is corrosive and may cause damage to eyes or skin and may be toxic if swallowed.
- Exercise care in handling the battery pack in order not to short the battery contacts with conducting materials such as rings, bracelets, and keys. The battery or conductor may overheat and cause burns.
- Charge the battery pack in accordance with instructions supplied with this unit.
- Observe proper orientation between battery pack and charger contacts.
- Batteries can be swallowed by children and are dangerous if swallowed. Always store and dispose of batteries where children can't reach them.

SAVE THESE INSTRUCTIONS

FCC REQUIREMENTS

PART 15

This device complies with Part 15 of the FCC Rules. Operation is subject to the following two conditions:
1. This device may not cause harmful interference, and
2. This device must accept any interference received, including interference that may cause undesired operation.

This equipment has been tested and found to comply with the limits for a Class B digital device, pursuant to Part 15 of the FCC Rules. These limits are designed to provide reasonable protection against harmful interference in a residential installation. This equipment generates, uses, and can radiate radio frequency energy and, if not installed and used in accordance with the instructions, may cause harmful interference to radio communications.

However, there is no guarantee that interference will not occur in a particular installation. If this equipment does cause harmful interference to radio or television reception which can be determined by turning the radio or television off and on, the user is encouraged to try to correct interference by one or more of the following measures:

1. Reorient or relocate the receiving antenna.
2. Increase the separation between the equipment and receiver.
3. Connect the equipment into an outlet on another circuit.
4. Consult the dealer or an experienced radio/TV technician for help.

EXPOSURE TO RADIO FREQUENCY RADIATION

This device and its antenna must not be co-located or operated in conjunction with any other antenna or transmitter. To comply with FCC RF exposure requirements, only use the supplied antenna.

The radiated output power of this internal wireless radio is far below the FCC radio frequency exposure limits. Nevertheless, the wireless radio shall be used as described in the manual.

The internal wireless radio operates within guidelines found in radio frequency safety standards and recommendations, which reflect the consensus of the scientific community.

Plantronics therefore believes the internal wireless radio is safe for use by consumers. The level of energy emitted is far less than the electromagnetic energy emitted by wireless devices such as mobile phones. However, the use of wireless radios may be restricted in some situations or environments, such as aboard airplanes. If you are unsure of restrictions, you are encouraged to ask for authorization before turning on the wireless radio.

NOTE: Modifications not expressly approved by Plantronics, Inc. could void the user's authority to operate the equipment.

PART 68

This equipment complies with Part 68 of the FCC rules and the requirements adopted by ACTA. On the exterior of this equipment is a label that contains a product identifier in the format US:AAAEQ##TXXX. If requested, this information must be provided to your telephone company.

A plug and jack used to connect this equipment to the premises wiring and telephone network must comply with the applicable FCC Part 68 rules and requirements adopted by ACTA. A compliant telephone cord and modular plug is provided with this product. It is designed to be connected to a compatible jack that is also compliant. See installation instructions for details.

The REN is useful to determine the quantity of devices you may connect to your telephone line. Excessive RENs on a telephone line may result in the devices not ringing in response to an incoming call. In most, but not all areas, the sum of the RENs should not exceed five (5.0). To be certain of the number of devices you may connect to your line, as determined by the REN, contact your local telephone company. For product approved after July 23, 2001, the REN for this product is part of the product identifier that has the format US:AAAEQ##TXXX. The digits represented by ### are the REN without the decimal point. (For example, 03 represents a REN of 0.3.) For earlier producers, the REN is separately shown on the label.

If this telephone equipment causes harm to the telephone network, the telephone company will notify you in advance that temporary discontinuance of service may be required. But if advance notice isn't practical, the telephone company will notify the customer as soon as possible. Also, you will be advised of your right to file a complaint with the FCC if you believe it is necessary.

The telephone company may make changes in its facilities, equipment, operations, or procedures that could affect the proper functioning of your equipment. If they do, you will be notified in advance in order for you to make necessary modifications to maintain uninterrupted service.

If trouble is experienced with this unit, for repair or warranty information, please contact customer service at (800) 544-4660. If the equipment is causing harm to the network, the telephone company may request that you disconnect the equipment until the problem is resolved.

DO NOT DISASSEMBLE THIS EQUIPMENT: it does not contain any user serviceable components.

We recommend the installation of an AC surge arrester in the AC outlet to which this equipment is connected. Telephone companies report that electrical surges, typically lightning transients, are very destructive to customer terminal equipment connected to AC power sources.

Printed in China. 63913-03 (07/05)
and Patents Pending
Patents U.S. 5,210,791; 6,735,453; 6,922,667; D,696,029; EM 69109
trademarks or registered trademarks of Plantronics, Inc.
the logo design, IntelliStand, and Sound Innovation are
© 2002 - 2005 Plantronics, Inc. All rights reserved. Plantronics,
www.plantronics.com

PLANTRONICS
SOUND INNOVATION

LIMITED WARRANTY

For Plantronics Commercial Products Purchased in the US

- This warranty covers defects in materials and workmanship of Commercial Products manufactured, sold or certified by Plantronics which were purchased and used in the United States.
- This warranty lasts for one year from the date of purchase of the Products.
- This warranty extends to you only if you are the end user with the original purchase receipt.
- We will, at our option, repair or replace the Products that do not conform to the warranty. We may use functionally equivalent reconditioned/refurbished/ remanufactured/pre-owned or new Products or parts.
- To obtain service in the U.S. contact Plantronics at (800) 544-4660. If you need additional information, please contact our service centers at the numbers provided.
- THIS IS PLANTRONICS' COMPLETE WARRANTY FOR THE PRODUCTS.
- This warranty gives you specific legal rights, and you may also have other rights which vary from state to state or province to province. Please contact your dealer or our service center for the full details of our limited warranty, including items not covered by this limited warranty.

The Plantronics Technical Assistance Center (TAC) is ready to assist you! Dial (800) 544-4660 x5538 or visit the Support section of our website at www.plantronics.com. For accessibility information also call the Technical Assistance Center.

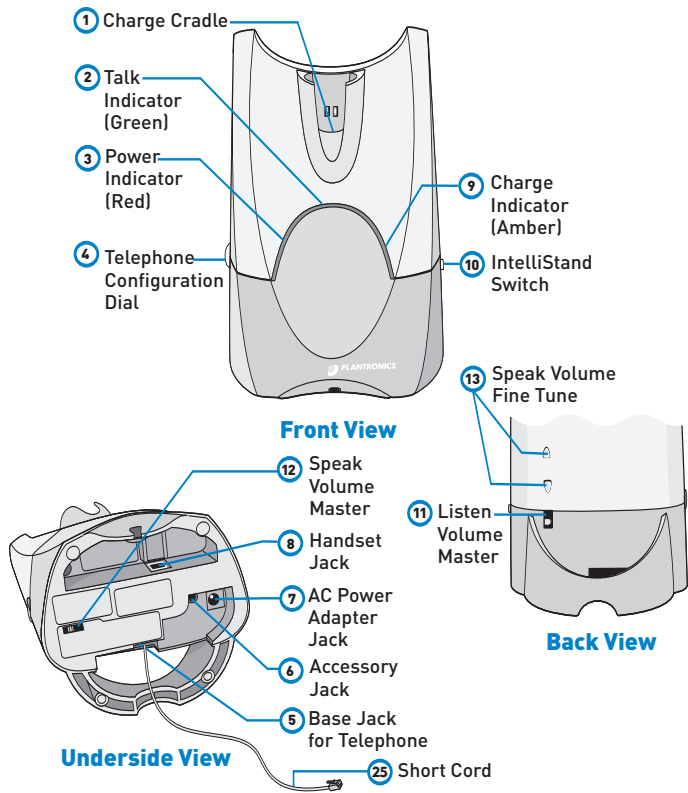


TRC
TELECOM RESOURCE
CORPORATION
trcnetworks.com

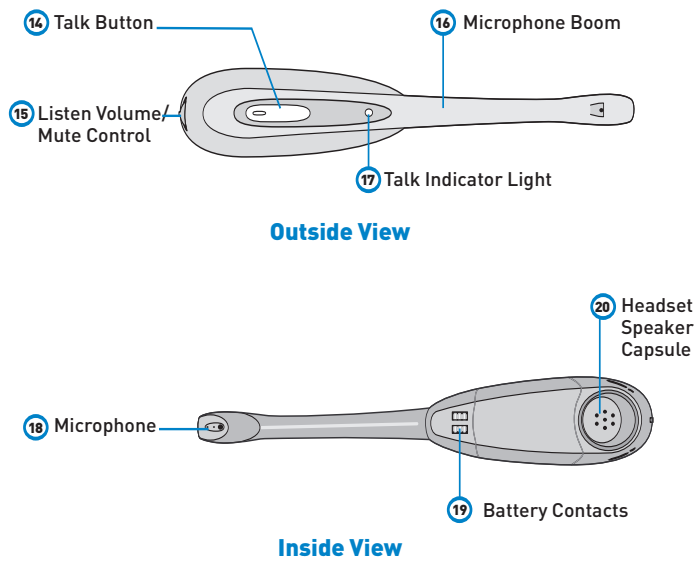
Have A Question?
Need More Info?
Call Us: 1 800 398 4044

COMPONENTS OF THE CS50/55 SYSTEM

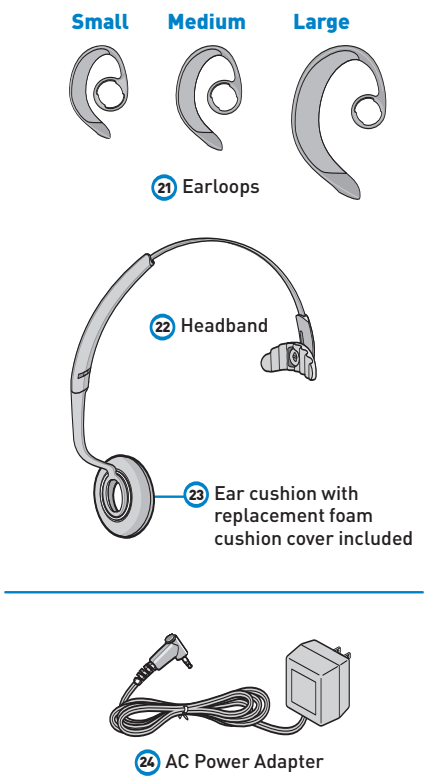
BASE & CHARGING UNIT



CORDLESS HEADSET



WEARING OPTIONS



CS50/55 WIRELESS OFFICE HEADSET SYSTEM

This Quick Start Guide and the Product Information Booklet are located on our website at www.plantronics.com/documentation/. Choose your language preference and Plantronics model number.

Set Up the Base

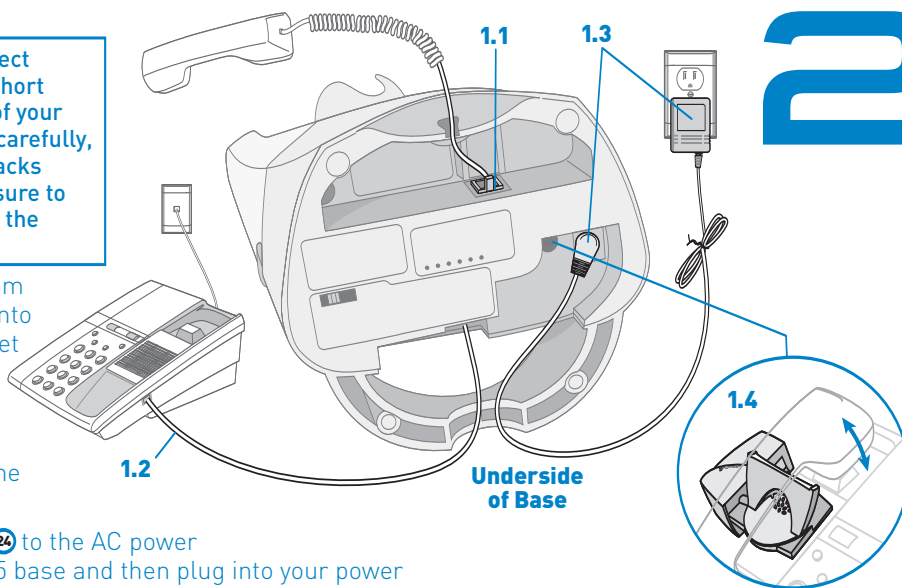
1 **CAUTION:** It is important for correct and safe operation that the CS50/55 short cord is installed into the proper jack of your telephone. Follow these instructions carefully, especially if your telephone has two jacks where the headset was attached. Be sure to note or mark which jack was used for the headset.

1.1 Unplug the curly cord of your handset from your telephone and insert the handset plug into the jack on the CS50/55 base with the handset symbol **8**.

1.2 The CS50/55 base has a short cord **25** attached. Place the free end of this short cord into the jack on your telephone where the handset plug had been connected.

1.3 Connect the supplied AC power adapter **24** to the AC power adapter jack on the underside of the CS50/55 base and then plug into your power source. The red power indicator light should go on.

1.4 ***Optional:** Install the optional handset lifter **after** you have completed Step 5. Use the handset lifter instructions to install it. More information on using the handset lifter with your CS50/55 system is located in the online Product Information Booklet.



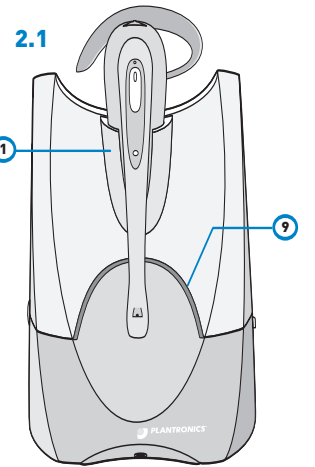
2

Charge the Headset

2.1 Dock the headset into the charge cradle **1**. The amber charge indicator **9** will flash during charge.

If charge indicator does not go on, reposition headset in the cradle.

2.2 The charge indicator will go steady after headset is fully charged and ready for use (approximately 3 hours).



3 Set Up the Headset

For over-the-head use

3.1 Determine right or left ear wearing position and snap the headset speaker capsule **20** into the headset retainer ring in the headband **22**.

3.2 While wearing the headset, adjust the microphone tip toward the corner of your mouth by rotating the speaker capsule within the retainer ring.

You may need to hold the headband in position while doing this, or take off the headset to adjust it.

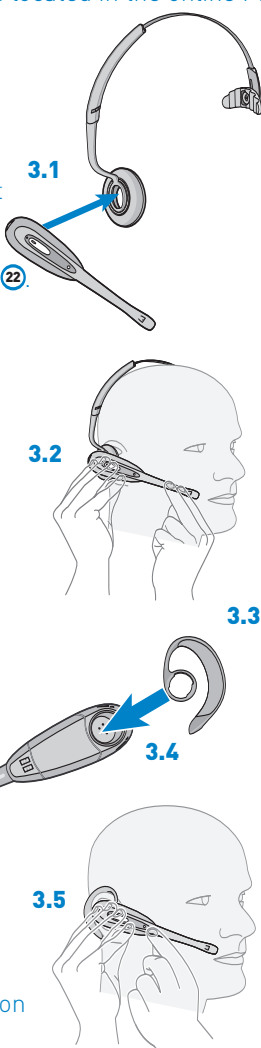
OR For over-the-ear use

3.3 Choose the earloop **21** size (small, medium, or large) that should best fit your ear. (You may need to experiment to find the best comfort).

3.4 Determine right or left ear wearing position and snap the headset speaker capsule into the earloop ring accordingly.

3.5 While wearing the headset, adjust the microphone tip toward the corner of your mouth by rotating the speaker capsule within the earloop retainer ring.

You may need to hold the earloop in position while doing this, or take off the headset to adjust it.



4 Setup and Test Your System

4.1 Begin with your "charged" headset mounted in the configuration of your choice.

4.2 Remove the telephone handset from its base, taking it "off-hook".

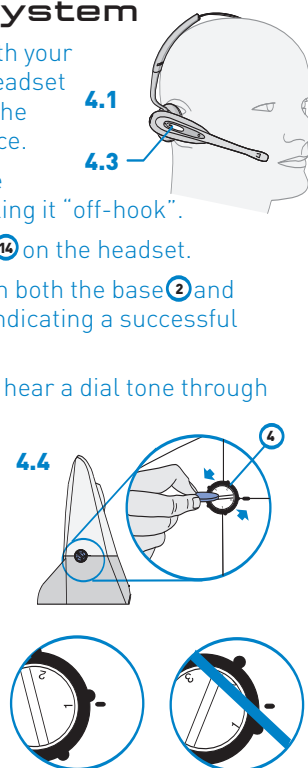
4.3 Press the talk button **14** on the headset. The talk indicator lights on both the base **2** and headset **17** should go on, indicating a successful link.

You should now be able to hear a dial tone through the headset.

4.4 If not, you need to adjust your telephone configuration dial **4** on the base to another one of its 4 positions until you hear the tone.

4.5 Continue configuration setup by making a test call to a friend or associate using the key pad on your telephone.

4.6 If they cannot hear you, try changing your telephone configuration dial on the base to another one of its 4 positions until you hear them and they hear you. Volume adjustments can be made separately as described in the next step.



5 Make Volume and Final Adjustments

5.1 Adjust your listening volume with the listen volume control **15** dial located towards the back of the headset capsule. Rock the dial up or down for volume changes.

5.2 For "larger step" adjustments to your listening volume, change the position setting on the listen volume master switch located on the back of the base **11**.

5.3 Push in the mute control **15** to activate mute, push in again to de-activate mute. (You will hear a slight beep in the speaker when mute is activated.)

5.4 Adjust your speak volume (how others hear you) with the speak volume fine tune **13** buttons on the back side of the base.

5.5 For "larger step" adjustments to your speak volume, change the position setting on the speak volume master **12** switch located on the bottom of the base.

5.6 You can now activate your IntelliStand feature if you have installed the optional handset lifter. When enabled, this feature provides automatic lifter activation by simply removing and replacing your headset in the base unit (no need to press the talk button on the headset).

To enable, slide the IntelliStand switch located on the side of the base to the on position (down) or disable by sliding to the off position (up).

